

# Nature's Christmas *Sandy Gervais*

With scarlet red cardinals nestled in a pine tree dusted with snow, nature makes its own beautiful Christmas - no lights or tinsel needed.

Take a walk through the snowy woods with this collection of flourishing poinsettias, pine cones, and holly berries and enjoy the beauty of nature.



\*17720 12 Berry

## *Panels*

Panel 24"x45"  
Blocks approx. 8"x9"



17720 13 Holly



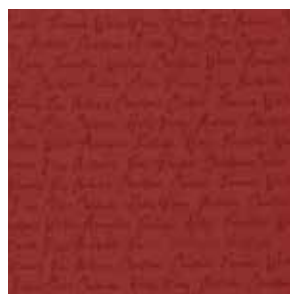
17720 14 Night



\*17729 21 Red



\*17722 12 Berry



\*17723 12 Berry



\*17724 12 Berry



Pattern by Pieces from my Heart - PH

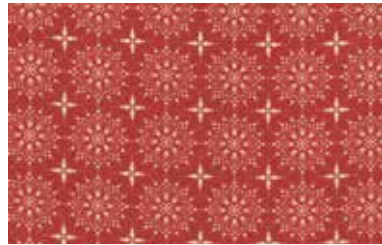
PH 580 or PH 580G— Winter Wonderland 46"X 46"

"G" Patterns ship with Group





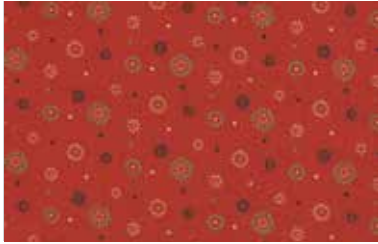
17725 22 Berry



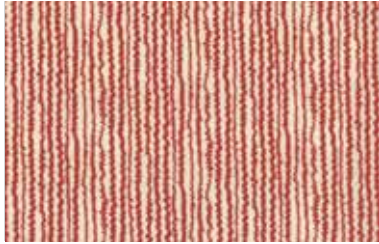
17726 22 Berry



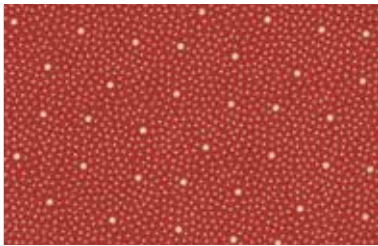
PH 577 or PH 577G— Nature's Christmas 48"X 64"



\*17727 12 Berry



\*17729 12 Berry



17728 12 Berry



\*17725 12 Berry

Fabrics with \* included in low cal assortment



\*17721 11 Snow



17723 11 Snow



\*17724 11 Snow



17726 11 Snow



\*17728 11 Snow



17729 11 Snow



\*17723 21 Holly



17722 11 Snow





PH 581 or PH 581G— 57"X 57"  
Red, White & Evergreen



17727 13 Holly

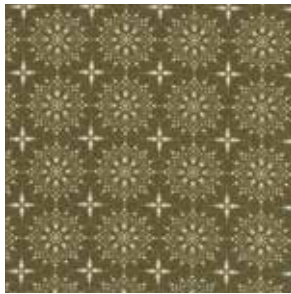


\* 17722 13 Holly

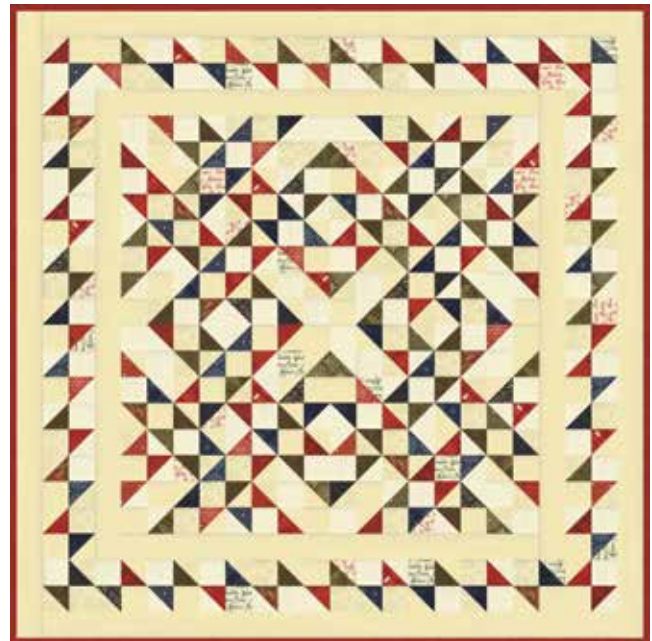
**FYI:** [piecesfrommyheart.net](http://piecesfrommyheart.net)



17724 13 Holly



17726 23 Holly



PH 579 or PH 579G — Star Gazing 48"X 48"



\*17721 13 Holly



17728 13 Holly



17729 13 Holly



# Little Projects



**PH 578 or PH 578G** 19"X 19"  
Owl Be Home for Christmas



**PH 582 or PH 582G**  
Tiny Treasures 16"X 16"



7521 571 Snow



\*7521 572 Berry



\*7521 573 Holly



7521 574 Night

Sandy Solids



17722 14 Night



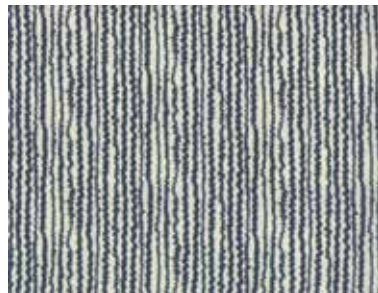
17727 14 Night



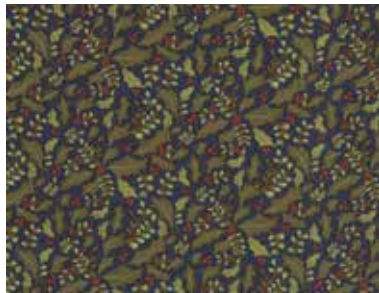
\*17728 14 Night



\*17726 24 Night



17729 14 Night



\*17724 14 Night



17725 24 Night



\*17721 14 Night

17720

Asst.  
15

Asst.  
10

Low Cal  
20

AB

DR

JR

LC

MC

PP

• 40 Prints  
• 100% Premium Cotton

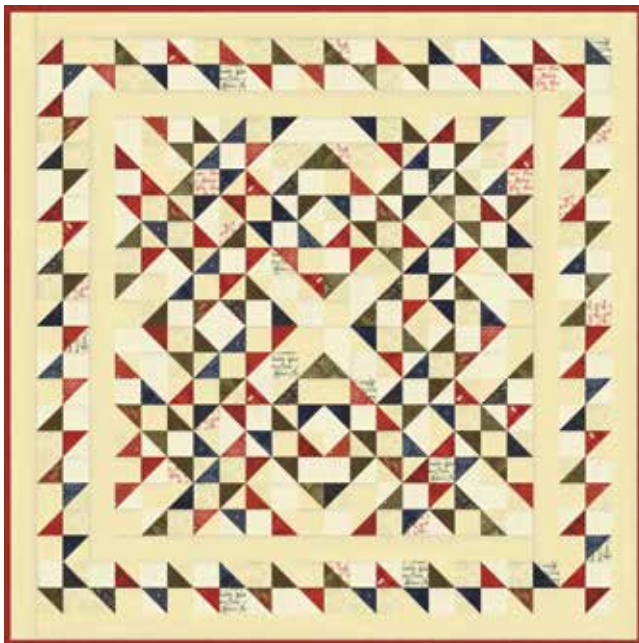
AB Bundle includes one Panel - 17720-12 DR's, JR's, LC's MC's & PP's do not include Panels.  
DR's, JR's, LC's MC's & PP's include two each of 7521-571, 572 & 573. DR's include only reds, greens and creams.

*Delivery: June, 2013*



Pieces From My Heart – PH  
**Red, White & Evergreen** 57"x57"  
 PH 581 or PH 581G

Yardage		1Q	10 Qs
<b>Fourth Yards (7)</b>		¼	2½
17722-13	17726-11	17728-11	7521-571
17724-13	17727-13	17729-11	
<b>Assorted Yardage (3)</b>		1Q	10Qs
17720DR	center of quilt & borders	1	10
17729-21	binding	½	2½
17721-13	backing	3¾	36¾



Pieces From My Heart – PH  
**Star Gazing** 48"x48"  
 PH 579 or PH 579G

Yardage		1Q	10 Qs
17720JR	blocks & borders	1	10
17726-11	block bkgds.	⅓	3⅓
17728-11	block bkgds.	⅓	3⅓
17729-11	block bkgds.	⅓	3⅓
7521-571	blk bkgds & bord.	1⅛	11¼
7521-572	binding	¾	3¾
17724-11	backing	3⅓	33⅓





Pieces From My Heart – PH  
**Winter Wonderland** 46"x46"  
 PH 580 or PH 580G

Yardage		1Q	10 Qs
17720 LC	applique	1	10
17726-11	snow	¼	2½
17728-14	background	7/8	8¾
7521-571	snow	¼	2½
7521-572	binding	¾	3¾
17724-12	backing	3	30



Pieces From My Heart – PH  
**Owl Be Home for Christmas** 19"x19"  
 PH 578 or PH 578G

Yardage		1Q	10 Qs
17720PP	bkgd, app & borders	1	10
17725-12	backing	¾	6¾
17729-21	Binding	¼	2½



Pieces From My Heart – PH  
**Tiny Treasures** 16"x16"  
 PH 582 or PH 582G

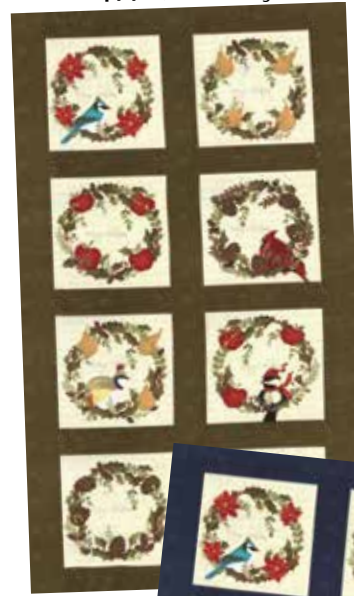
Yardage		1Q	10 Qs
17720MC	quilt	1	10
17725-22	outer borders	¼	2½
7521-571	sashing & inner borders	¼	2½
7521-572	binding	¼	2½
17725-12	backing	5/8	6¼



Pieces From My Heart – PH  
**Nature's Christmas** 48"x64"  
 PH 577 or PH 577G

Yardage		1Q	10 Qs
17720-12	blocks(panel)	1	10
17726-22	outer border	$\frac{3}{4}$	$7\frac{1}{2}$
17728-11	blocks & border	$1\frac{2}{3}$	$16\frac{2}{3}$
17728-13	border Blocks	$\frac{3}{4}$	$7\frac{1}{2}$
7521-571	blks & inner bord.	1	10
7521-572	centers/binding	$\frac{1}{2}$	5
17728-12	backing	$3\frac{1}{3}$	$33\frac{1}{3}$

17720 13 Holly



17720 14 Night



17720 12 Berry

Yardages provided at the time of this printing may change.  
 Please consult the printed pattern before cutting kits.

Stay Connected!    

MODA WINTER 2013 FABRIC COLLECTIONS