

flower pot

Lella Boutique

Mother Nature is a brilliant artist. Look at the way she dots a meadow with flowers, or summons Queen Anne's Lace along an old highway road. At her call, sunflowers turn their glorious heads and follow the sun all day long. I have always admired the way a florist or gardener can harness the wild beauty of nature and transform it into a piece of heaven at home. I don't have much of a green thumb, so I get to create beauty in different ways. My flower gardens are held together with layers of fabric, batting, and thread. I gather baskets of blooms using curved seams and a hot iron.

Think of this collection as the seeds to plant in your own Flower Pot.

moda FABRICS + SUPPLIES® **APRIL DELIVERY**



LB 206 Gingham Style
80" x 80" FQ Friendly



LB 207 Gather Cream
72" x 72" LC Friendly
*Navy option available



LB 208 Flourish Cream
80" x 80" F8 Friendly



LB 208 Flourish Navy
80" x 80" F8 Friendly

flower pot *Lella Boutique*

EGGSHELL
9900 281



5160 11



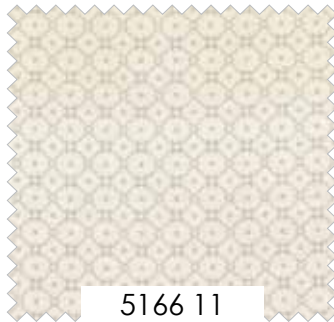
5162 11



5161 11



5163 11



5166 11



5163 21



5165 11



5162 14



5160 14



5161 14



5165 14



5167 14



5164 14

MINK
9900 430

BELLA SOLID COORDINATES

moda FABRICS + SUPPLIES® APRIL DELIVERY

flower pot *Lella Boutique*



5160

Asst. 15

Asst. 10

Low Cal 10

AB

F8

HB

JR

LC

MC

PP

APRIL DELIVERY

•34 Prints •100% Premium Cotton

HBs, JRs, LCs, MCs & PPs include 34 skus plus two each of 5160-11 & 5162.

modafabrics.com 59

RUST
9900 105

GALACTIC
9900 400

BELLA SOLID COORDINATES