



# Flower Girl

by Heather Briggs of *My Sew Quilty Life*

Channel your inner flower girl 🌸

*New Designer!*



Flowers have been my obsession since I was a little girl. Not only are they pretty, smell scrumptious, and bring beauty to my life, but they also evoke memories of my granny as she tended to her beautiful flower garden. Flower Girl channels spring days filled with sunshine and innocent laughter—when you didn't have a care in the world and could embrace life.

The collection features sweet and feminine florals in soft shades of cream, blush, peach, buttercup yellow, and sage and grass green. Flowers remind me that no matter what hardships I face, I can still grow strong roots and shine brightly every day. If you live your life like a flower, you'll always bloom.

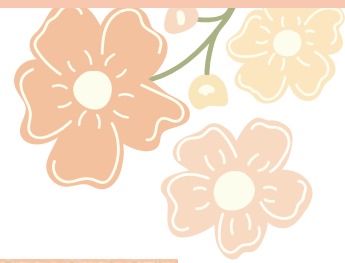
- Heather

March 2024 Delivery

IG | @mysewquiltylife #flowergirlfabric

*moda* FABRICS + SUPPLIES®





A



D



B



E



C

KIT  
31730

### Patterns by My Sew Quilty Life

A) MSQ 140 Sweet Spools | 67" x 75"

B) MSQ 141 Granny's Daisies | 60" x 60"

C) MSQ 142 Vintage Stitching | 60" x 78"

Pattern also includes Mini Version | 40" x 40"

KIT31730

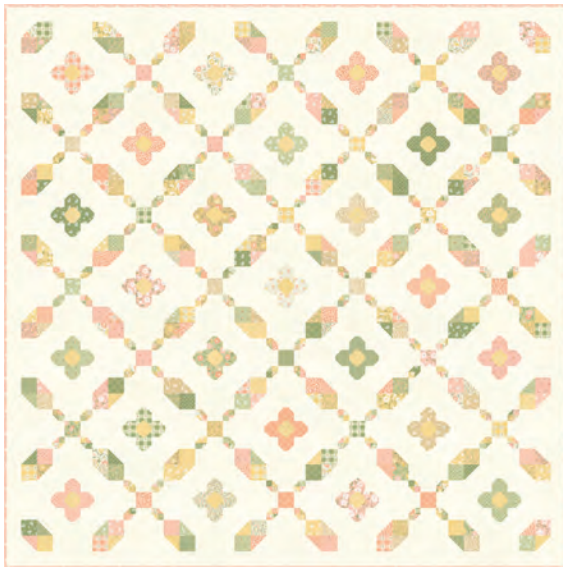
D) MSQ 143 Petal Patches | 62" x 62"

LC Friendly

E) MSQ 144 Baskets & Bows | 68" x 68"

More patterns on next page





F



H



G



I

Patterns continued

F) MSQ145 Garden Gate | 71" x 71"  
JR Friendly

G) FREE PATTERN Hexi Petals | 35" x 46"  
Download from [mysewquiltylife.com](http://mysewquiltylife.com)

H) FREE PATTERN Hexi Petals | 35" x 46"  
Download from [mysewquiltylife.com](http://mysewquiltylife.com)

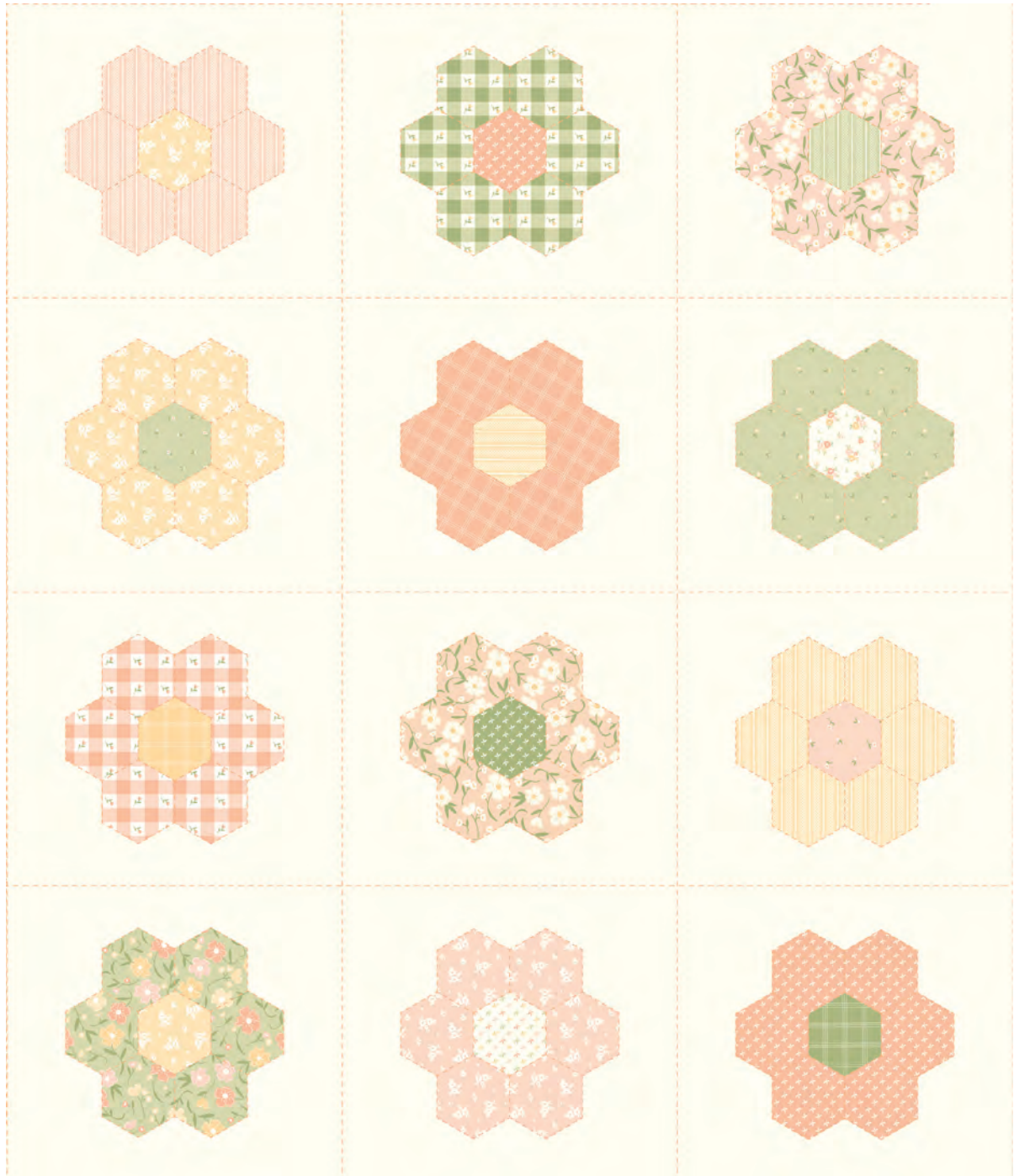
I) SLF 2251 Spring Posy Pouch | 8" x 10"  
by Sew Lux Fabric & Gifts

J) HB5040FG10 Aurifil Thread Set

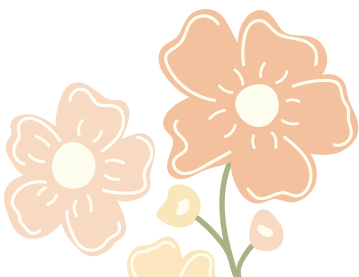


J

 *Flower Girl* by Heather Briggs of *My Sew Quilty Life*



31738 11 | Panel Size: 36" x 44" | Block Sizes: 9" x 9"



*moda* FABRICS + SUPPLIES® March 2024 Delivery



9900 182 PORCELAIN

9900 39 PARCHMENT

9900 457 PEAR

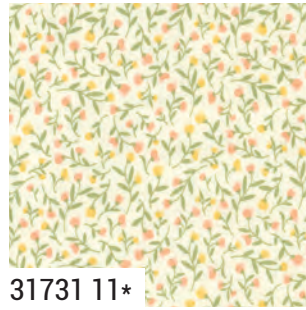
9900 172 CIRCA CELADON

Bella Solid Coordinates

# Flower Girl by Heather Briggs of My Sew Quilty Life



31730 11\*



31731 11\*



31732 11\*



31734 11\*



31736 21

31736 11\*



31734 18



31736 18



31730 18\*



31731 18\*



31732 18



31733 19\*



31735 19



31734 19



31737 19\*



31736 19



# Flower Girl by Heather Briggs of My Sew Quilty Life

9900 88 BUBBLE GUM

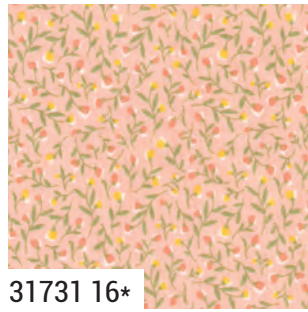
9900 78 PEACH

9900 148 SOFT YELLOW

Bella Solid Coordinates



31730 16\*



31731 16\*



31734 16\*



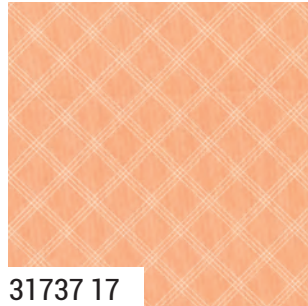
31736 16



31732 16\*



31735 17\*



31737 17



31731 17



31733 17\*



31731 12



31734 12\*



31730 12\*



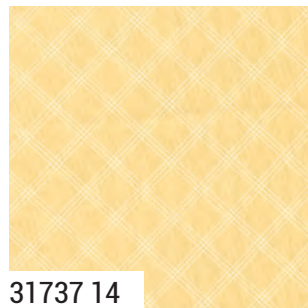
31730 14\*



31731 14\*



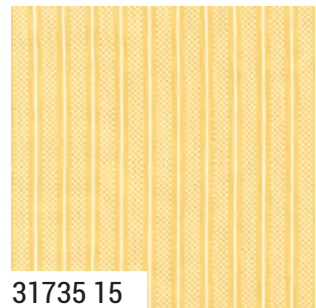
31734 14



31737 14



31733 15\*



31735 15

31730

Asst. 15

Asst. 10

Low Cal 10

AB

F8

JR

LC

MC

PP

KIT

MARCH DELIVERY

•35 Prints •100% Premium Cotton  
 Precuts do not include panel. JRs, LCs, MCs & PPs include 34 skus plus two each of 31730 & 31731-11.  
 Bella Solid Coordinates are not included in assortments or precuts.